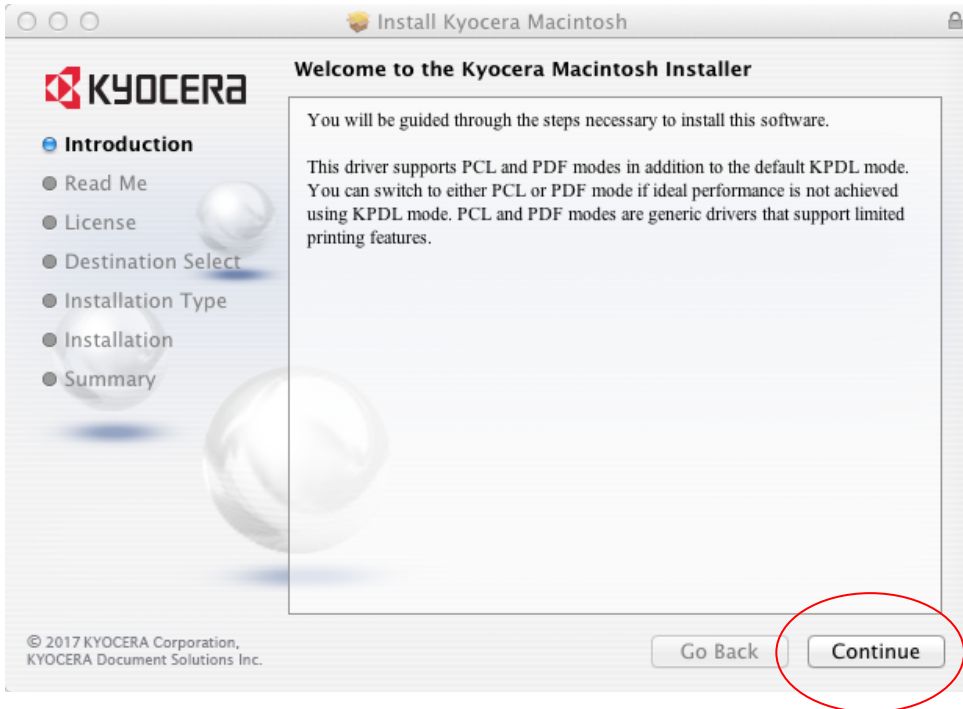


Open a browser (Safari, Chrome, etc.) and navigate to <http://www.4bmc.com>. Click

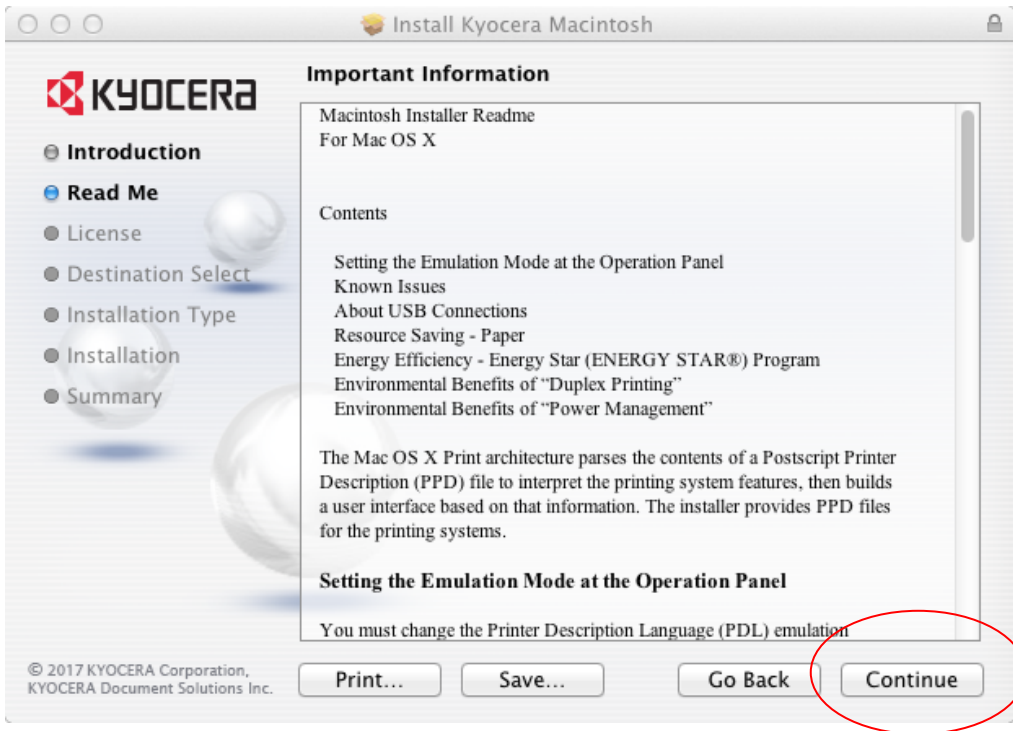
Package Installer Setup

You can install the driver using the provided package installer.

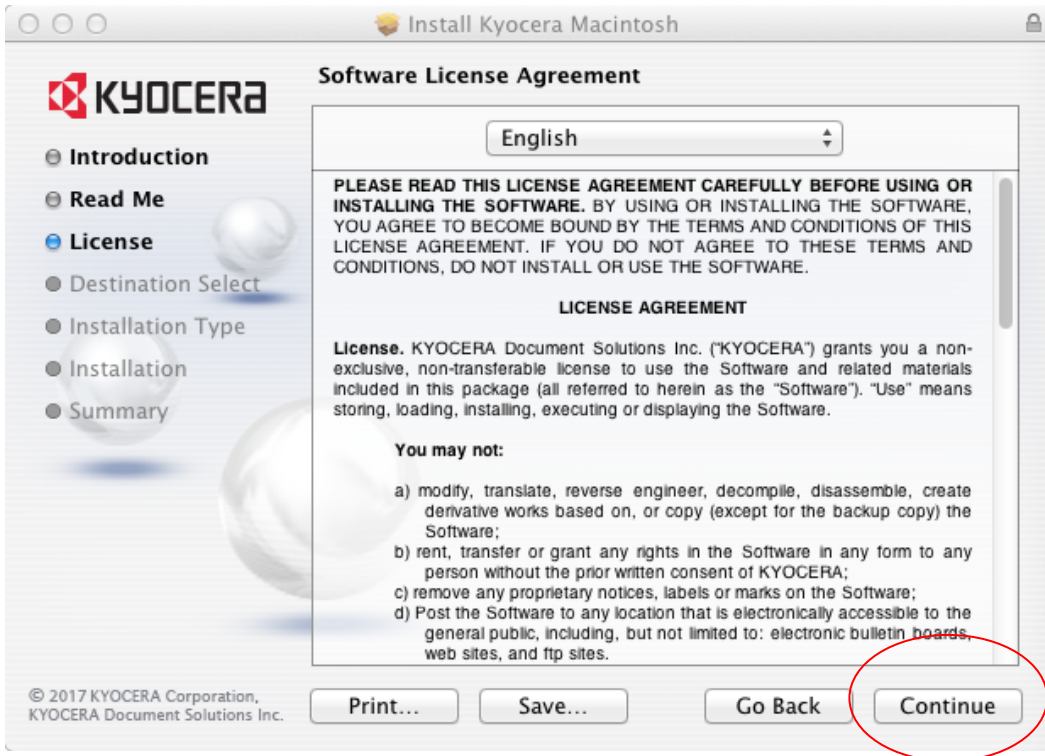
1. Double-click the .DMG file to run the installer.
2. In the installer dialog, click Continue to proceed to the readme page.



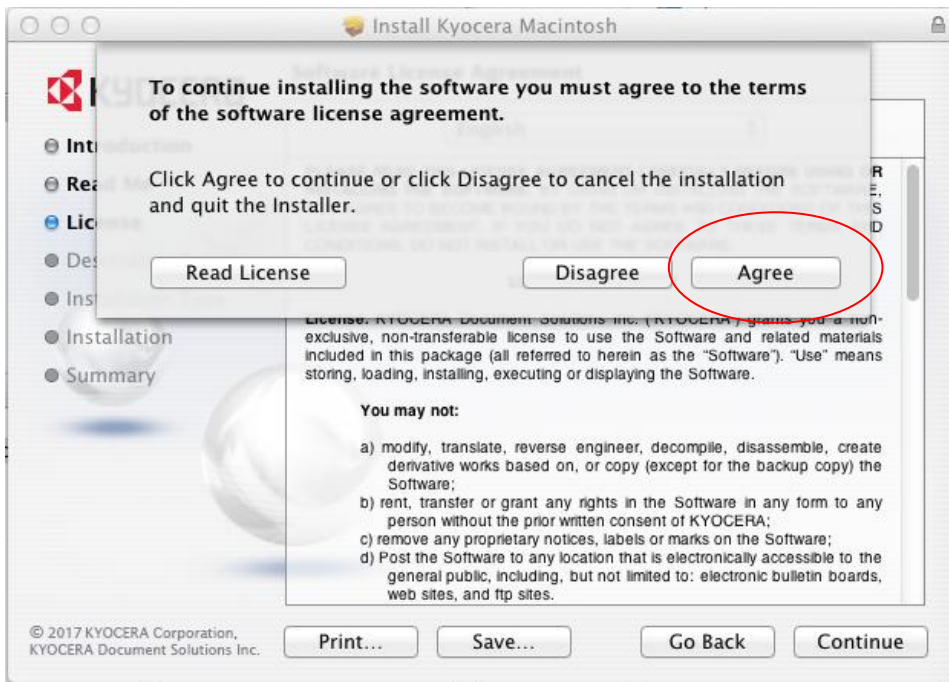
3. Click Continue to proceed to the license agreement page.



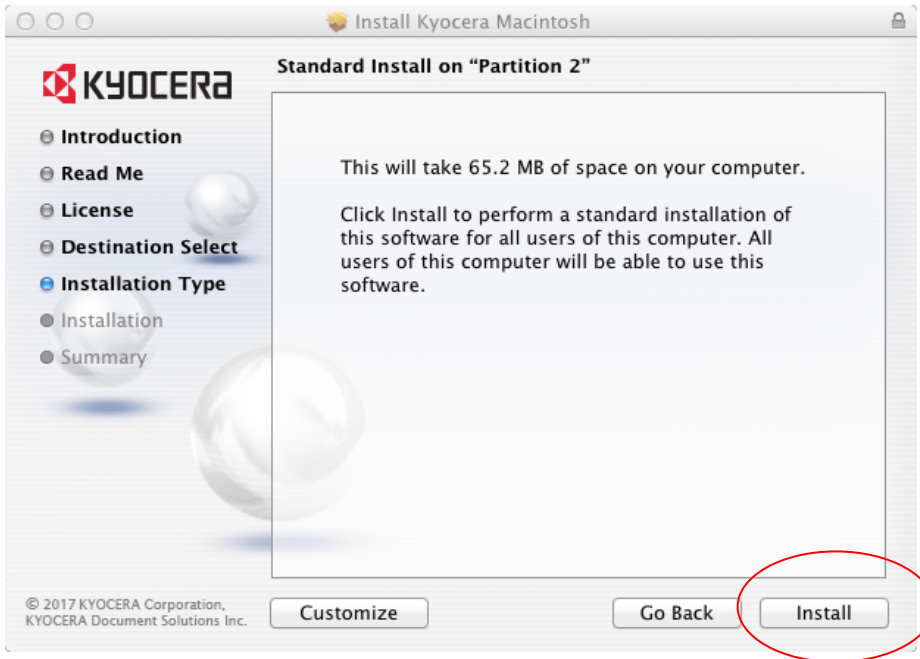
4. Review the Software License Agreement , and then click Continue .



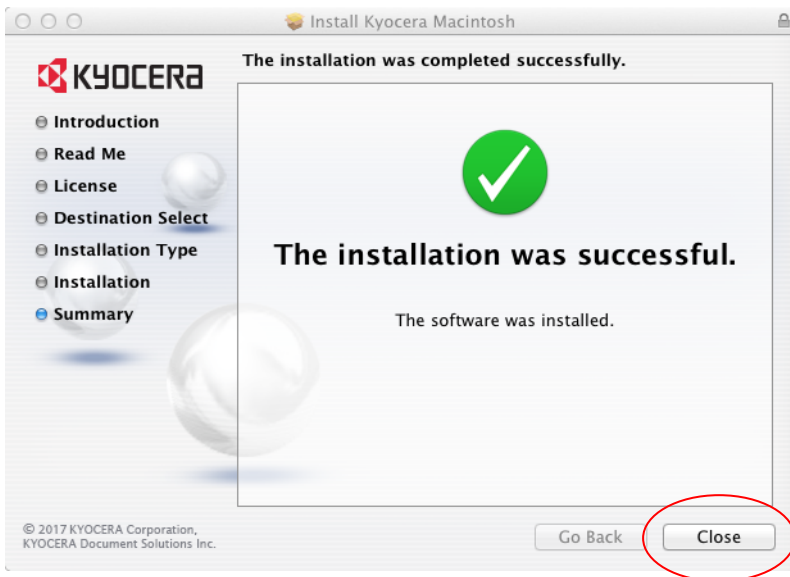
5. Click **Agree** to accept the terms of the license agreement.



6. Click **Install** and enter the admin password to complete the standard installation. Alternatively, you can select **Customize** to perform a custom installation. For custom installation, select the Print Option Pane checkbox to install the Print Option Pane.



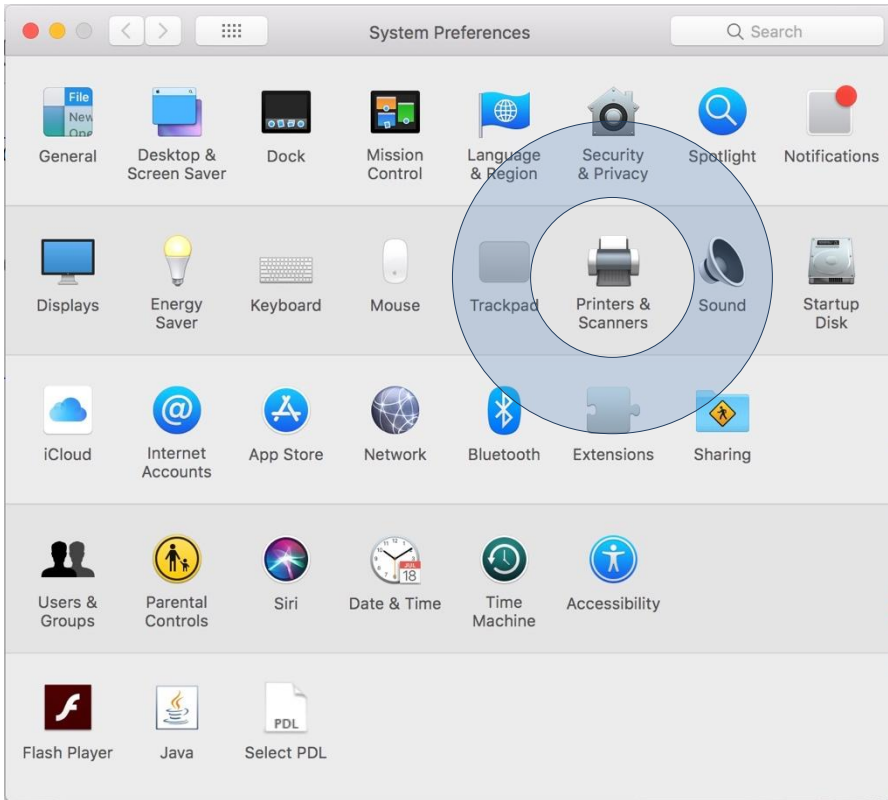
7. Click **Close** to exit when the installation is complete.



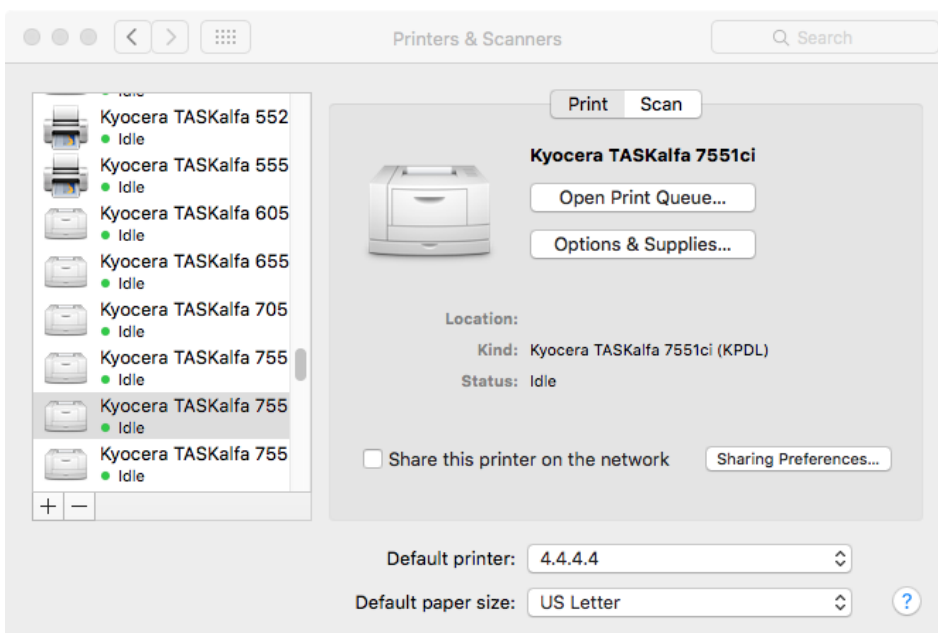
Adding Printers

After you install the driver, you can add the printers to be used on the system.

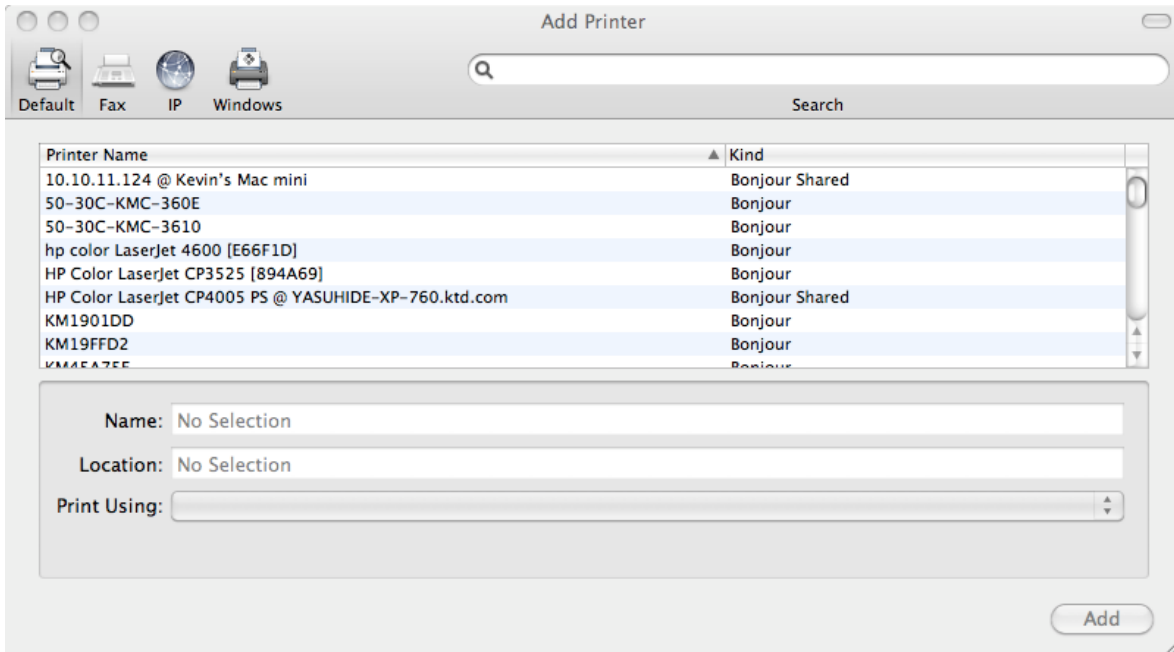
1. Open **System Preferences** and click **Printers and Scanners** (this may also be called Print & Scan or Print & Fax), depending on the Mac OS X version you are using).



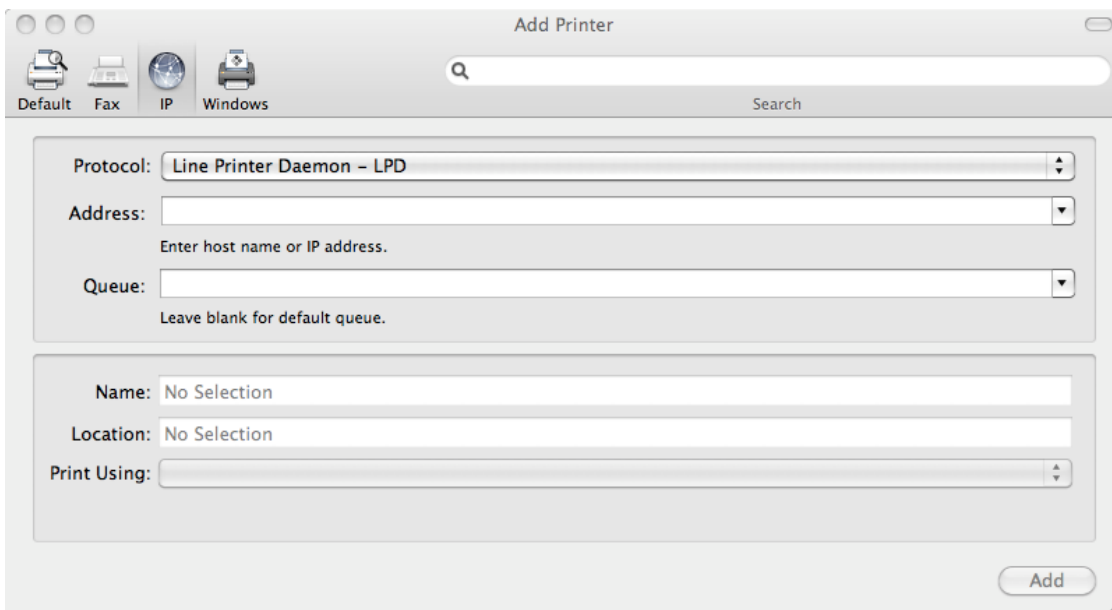
2. In the Printers & Scanners dialog, you can click the "+" icon at the bottom of the Printers list to open the Add Printer dialog (this may also be called Add, depending on the Mac OS X version you are using).



To add a printer, you must first choose a connection type—Bonjour, IP Printer, or Windows. If you choose the Default connection type, Printer Setup Utility displays a list of all available printers with Bonjour support. When you select a printer to add to the printers list, Printer Setup Utility retrieves the selected printer's address, icon, and model information. Printer Setup Utility then uses this information to create a new printer queue, and then adds the printer to the list when you click Add.



For better printing support, it is recommended to use Line Printer Daemon (LPD) for the protocol. To add an LPR printer that uses IP, enter the printer's DNS host name or IP address and then select the appropriate model from the Print Using menu. The matching PPD for the printer is automatically selected by the OS.



3. Click **Add**.